

Several large, solid-colored geometric shapes are arranged in a decorative pattern around the central image and text. These include a large teal shape with a rounded corner at the bottom left, a dark blue square, a tall lime green rectangle, a teal rectangle, a lime green square, and a dark blue semi-circle at the top right.

Quality Modular Buildings

In stock for immediate delivery – hire or buy
March 2022

Who We Are

We are Algeco. The market-leading UK provider of modular and portable space solutions.

Our purpose

Together, we build sustainable futures.

Almost 60 years of hire solutions

We've been helping organisations solve their temporary space challenges quickly, easily and cost-effectively for 60 years.



Why Algeco?

Save time, hassle, and expense managing multiple suppliers. Our hire products are available instantly nationwide, with quick, hassle-free installation.



Turnkey Solutions

Our turn-key services provide all the exterior and interior facilities you need for your project through one point of contact.



Best Value

Through economies of scale, our products and services balance quality to offer you the best value possible.



Availability

With over 40,000 portable and modular units for rent in the UK, we have the best product availability on the market.



UK-Wide Service

With locations throughout the UK, we can deliver and install your portable buildings directly to your site, no matter where you are.



On time, on budget? How good are we? Ask our customers.

We ask after every project how well we've done and use the Net Promoter Score system to understand satisfaction. Our latest results are scored as Excellent.







Strength in Depth

Algeco is part of the Modulaire Group

Europe & Asia Pacific's leading business service company specialising in modular space.

-  25 countries in Europe and Asia Pacific
-  6,000 employees in 250 locations
-  250,000 units with fleet net book value >\$3Bn

Algeco UK Limited

-  1,200 Employees in 23 locations providing over 40,000 units
-  Huge product range from containers to multi-storey buildings
-  Two assembly factories in Cannock and Carnaby
-  20 branches covering the whole of the UK in three regions





Turnkey Solutions

Complete site set up through one point of contact

Building structures are only part of Algeco hire solutions. Our one-stop-shop provides all the interior and exterior details of your temporary building hire, installed and ready to go.

Whole solutions, not just building shells

Avoid juggling multiple suppliers, purchase orders and invoices. Arrange everything from fencing and furniture to fire safety equipment and white goods before your accommodation arrives.

We can even supply Wi-Fi data, display your branding on the outside of your building and keep consumables like hand sanitiser stocked up.

Make life easier

Sourcing everything you need from one provider means you and your teams can get to work faster with less hassle. It also means you spend less time coordinating and communicating with suppliers, which results in fewer moving parts on-site.





Here's a selection of interior and exterior products and services we can include with your temporary accommodation.

- **Building Regulations Compliance**
- **Site Surveys**
- **CDM Regulations Compliant**
- **Foundations**
- **Data Systems**
- **Fire & Intruder Alarms**
- **Principal Designer / Principal Contractor**
- **Climate Control Systems**
- **Ventilation Systems**
- **Renewable Technologies**
- **BREEAM Compliant**
- **Enabling Works**
- **Design Services**
- **Building Management Systems**
- **BIN Models Available**
- **Temporary Accommodation**
- **Steps, Staircases & Ramps**
- **Access Control Systems**
- **HTM / HBN / Building Bulletins Compliance**
- **White Goods**
- **Wi-Fi Data**

The Versatile Option

All of our stock buildings can be prepared for a variety of applications:

- Classroom Accommodation
- Office Accommodation
- Welfare / Canteen Accommodation
- Health Centres / Temporary Wards

Algeco modular buildings (for hire) met the relevant Building Regulations at the time of manufacture, so achieve Building Control approval for public use.



Two Storey Administration Building

Ref: 896DSAB

Dimensions: 9.6m x 12.0m

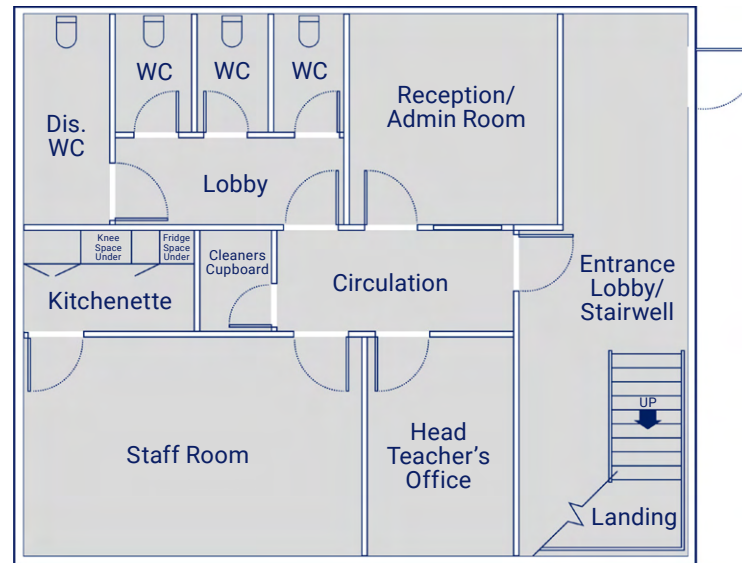
Number of modules: 8

Overall size: 230m²

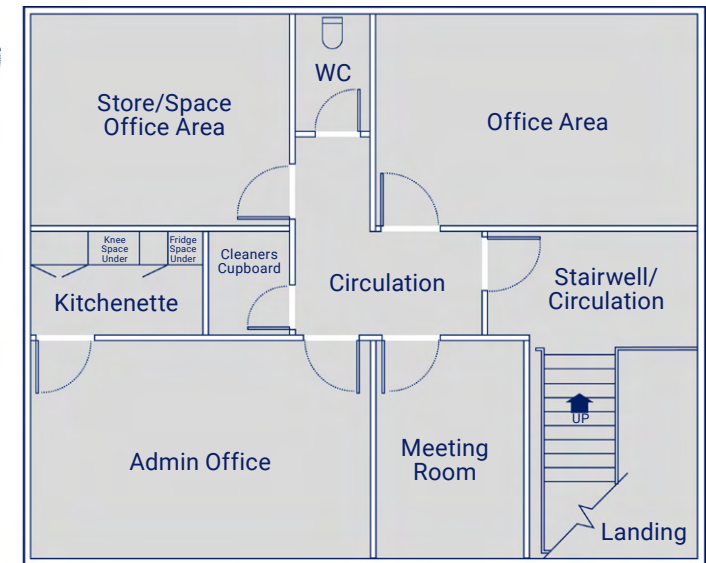
Location: Midlands

Two-storey administration building comprising of entrance lobby, 6 No. offices, staff room, 2 No. kitchenettes, store rooms and toilets. The building has been designed in line with building regulation compliance.

Ground Floor



First Floor



Two Storey 4 Classroom Building with Toilets

Ref: 1296DSFCTD

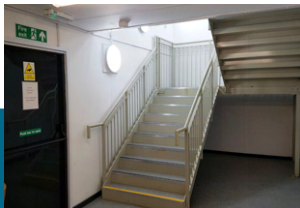
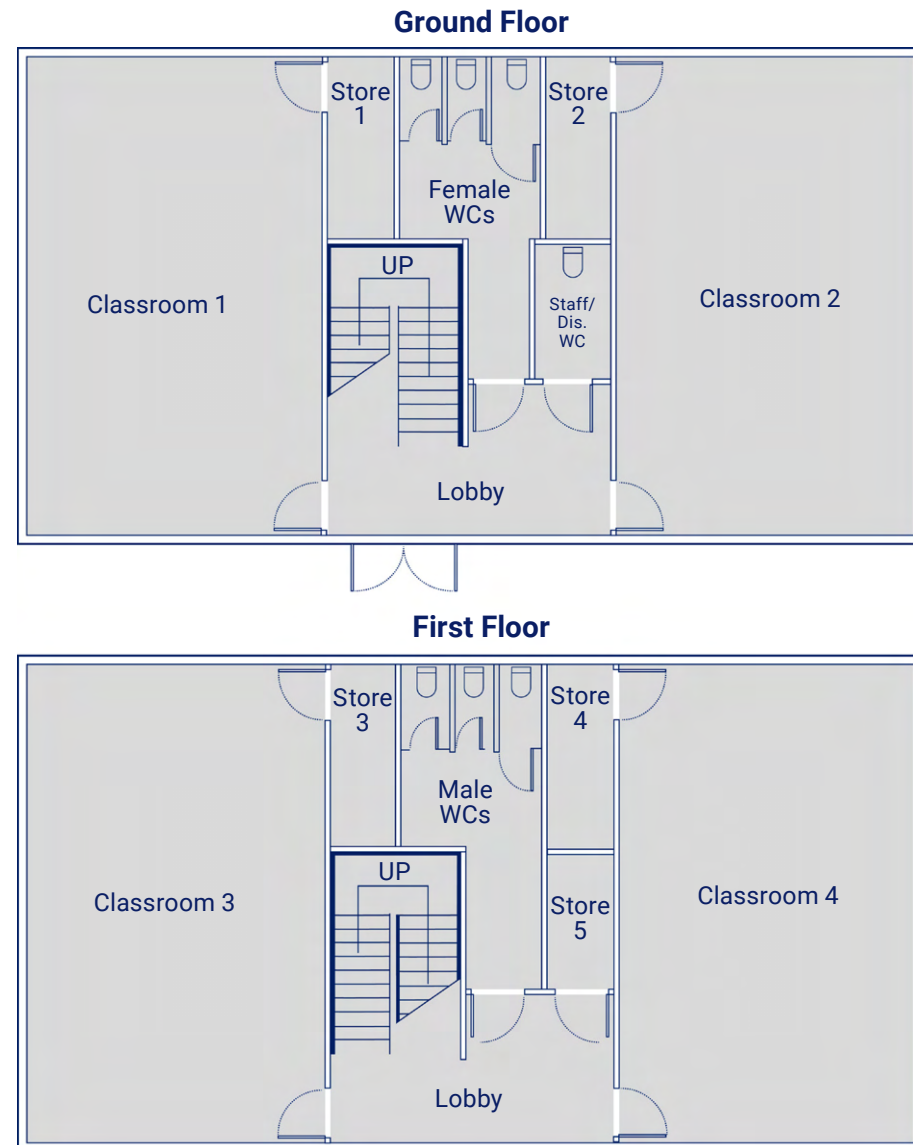
Dimensions: 9.6m x 18.0m

Number of modules: 12

Overall size: 345.6m²

Location: Midlands

Two-storey classroom building comprising of 4 No. classroom with lobby / cloaks, store rooms and toilets. The building has been designed in line with building regulation compliance.



Two Storey 8 Classroom Building with Toilets

Ref: 812DSECT

Dimensions: 12.0m x 28.0m

Number of modules: 12

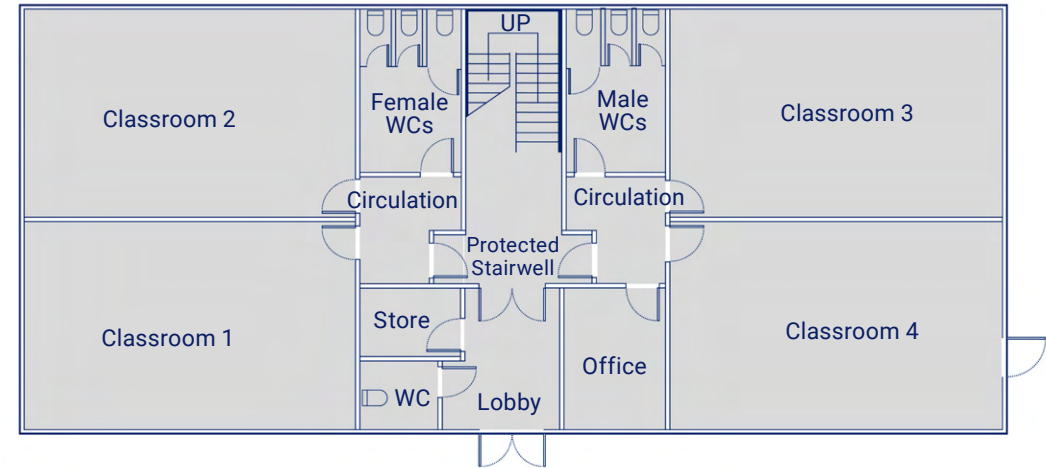
Overall size: 672.26m²

Location: Midlands

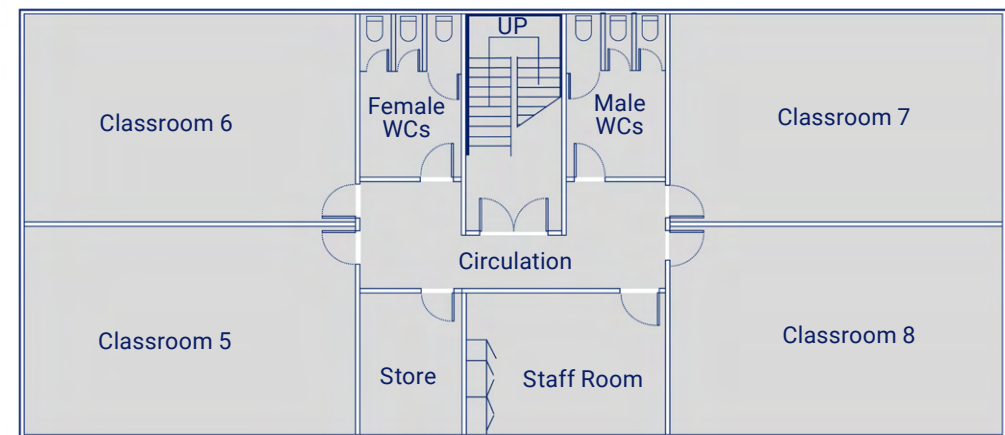
Two-storey classroom building comprising of 8 No. classroom with lobby, office & staffroom, stores and toilet facilities. The building has been designed in line with building regulation compliance.



Ground Floor



First Floor



Single-Storey Science Building

Ref: 596SL

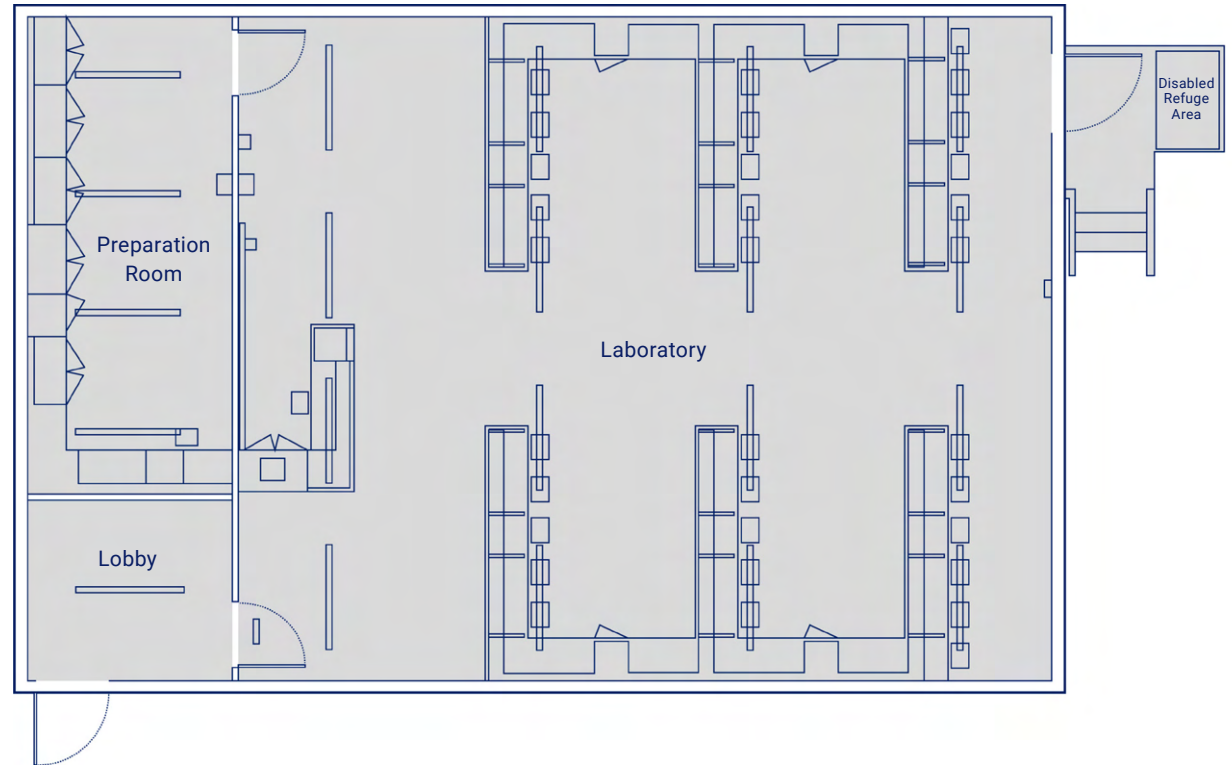
Dimensions: 9.6m x 15m

Number of modules: 5

Overall size: 144m²

Location: Midlands

Single-storey science building comprising of entrance lobby, 1 No. laboratory and 1 No. preparation room. The building has been designed in line with building regulation compliance.



Two-Storey Modular Education Building

Ref: PCL256

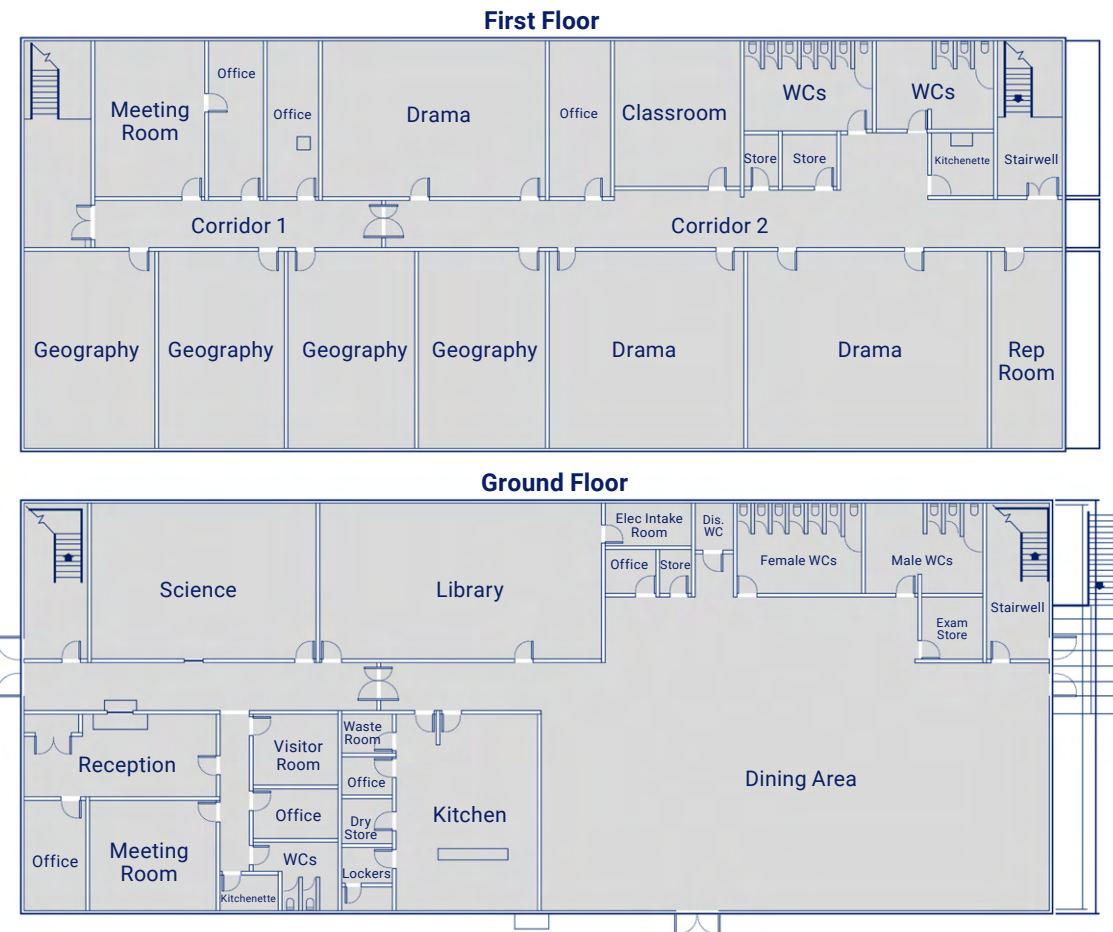
Dimensions: 19.2m x 49.8m

Number of modules: 64

Overall size: 1,910m²

Location: Midlands

This 64 bay two-storey modular education building gives an overall internal size of 1910m². Comprising of a number of classrooms, a dining area, store cupboards and WC facilities. The building has been designed in line with building regulation compliance.



Single-Storey 2 Classroom Building

Ref: PCL273

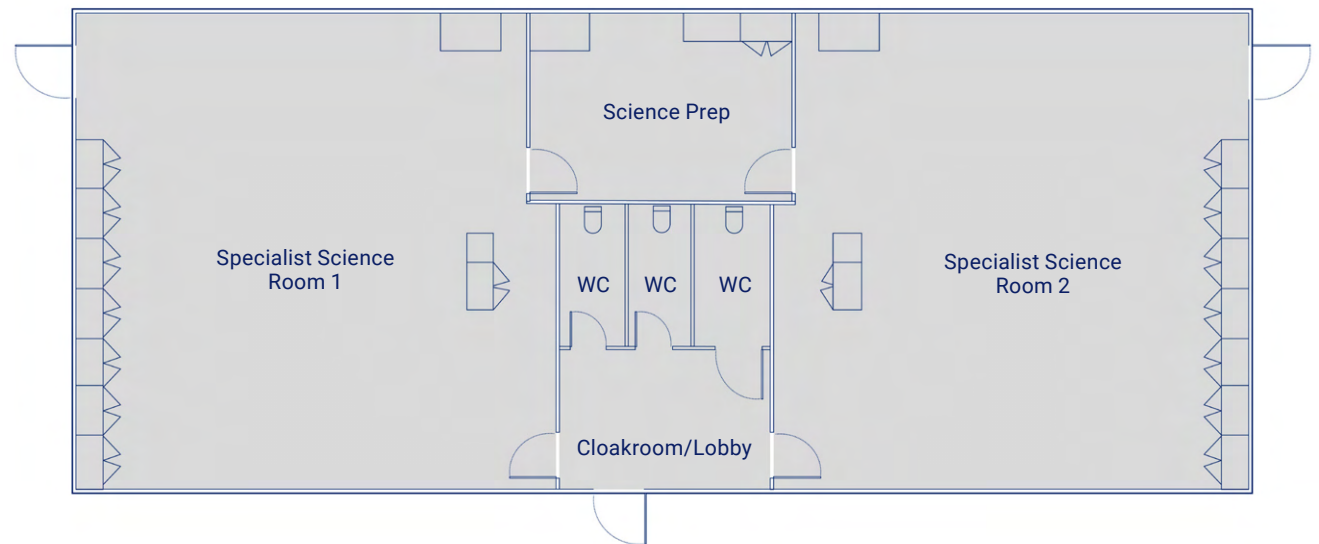
Dimensions: 9.6m x 24m

Number of modules: 8

Overall size: 230.4m²

Location: Cheshire

Single-storey classroom building comprising of a lobby / cloakroom area, toilet facilities (2 No. standard unisex, 1 No. disabled and 2 No. open plan classrooms, both with access to preparation room). The building has been designed in line with building regulation compliance.



Single-Storey Education Building

Ref: PCL282

Dimensions: 19.2m x 21.7m

Number of modules: 14

Overall size: 318.25m²

Location: Cheshire

Single-storey 14 bay education building comprising of; 1 No. small office, toilet facilities (staff & pupil), changing area, server room, cleaners room and ablutions.



Two-Storey Classroom Building

Dimensions: 9.6m x 47.86m

Number of modules: 32

Overall size: 918.9m²

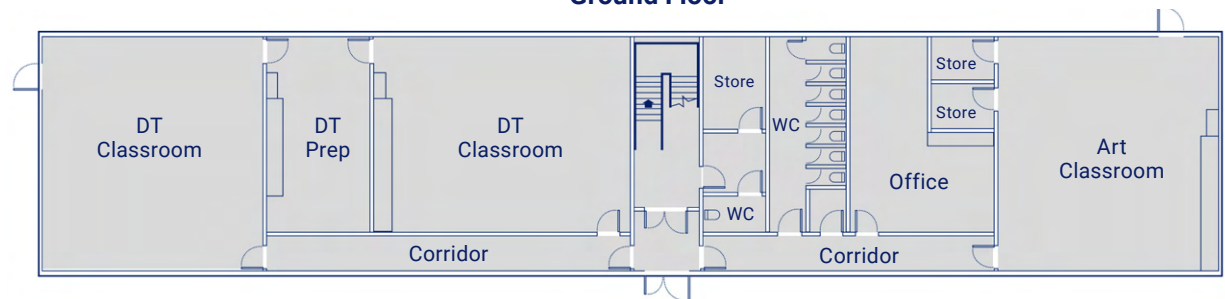
Location: Cheshire

Two-storey classroom building comprising of:

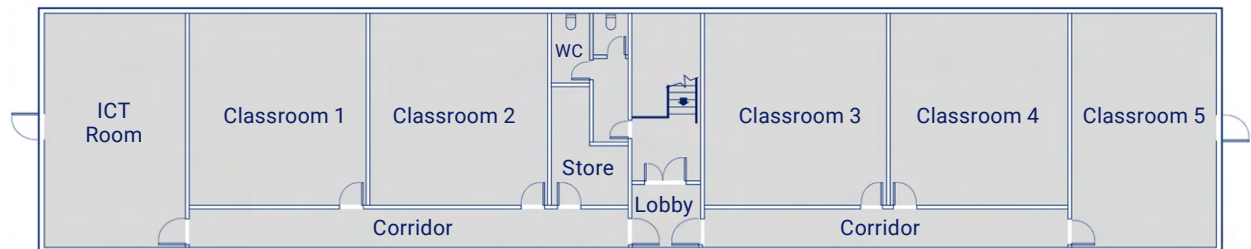
- Ground Floor: Entrance to lobby & stairwell, 2 No. store room, WC's (std, disabled), 2 No. DT classrooms c / w 1 No. DT prep room, 1 No. office c / w kitchenette and 1 No. art classroom c / w 2 No. art stores.
- First Floor: Stairwell leading to lobby, WCs (std), 1 No. store room, 1 No. ICT classroom and 5 No. classrooms (std).

The building has been designed in line with building regulation compliance.

Ground Floor



First Floor



Two-Storey Modular Building

Ref: PCL292

Dimensions: 46m x 20m

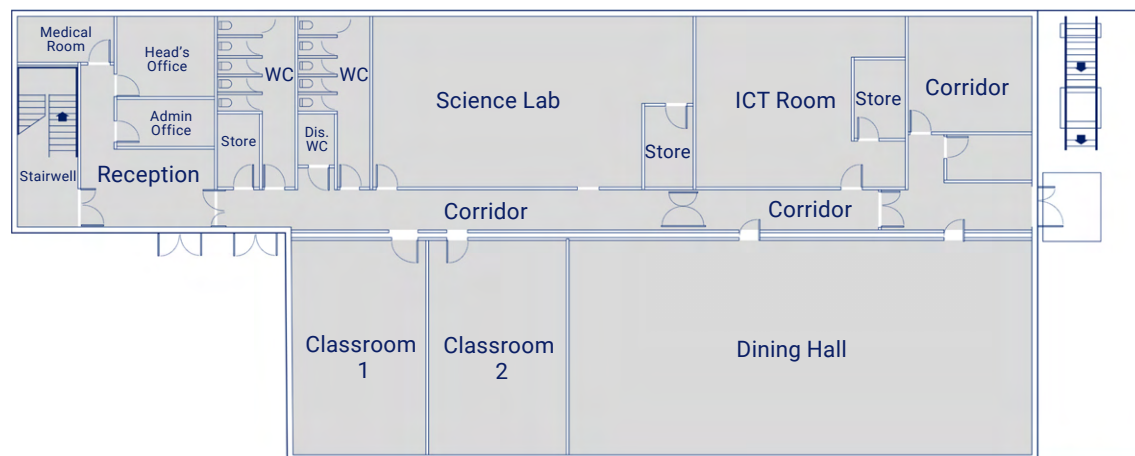
Number of modules: 52

Overall size: 1497m²

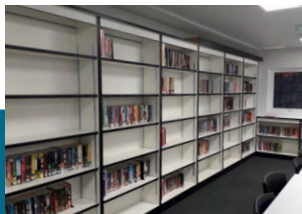
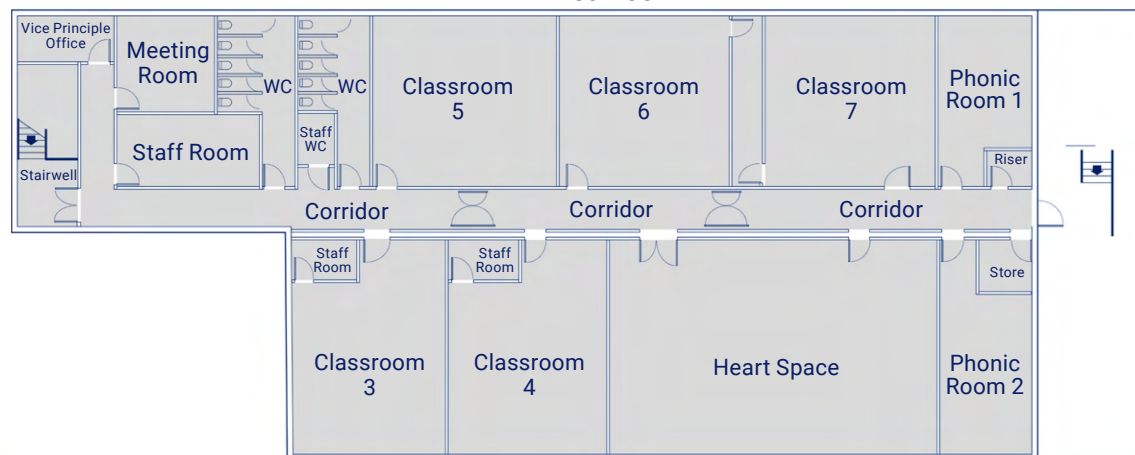
Location: Cheshire

Modular building comprising of large open plan rooms, store, meeting rooms and male / female toilets on both floors.

Ground Floor



First Floor



Two-Storey Modular Building

Ref: PCL293

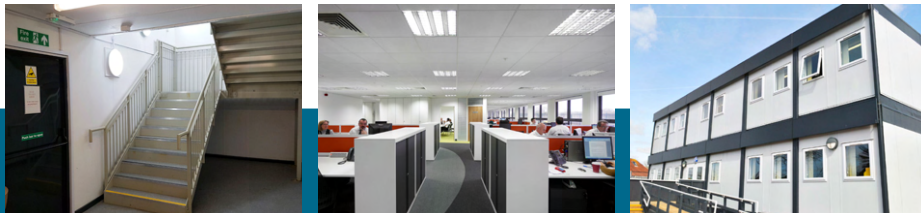
Dimensions: 16m x 10m

Number of modules: 10

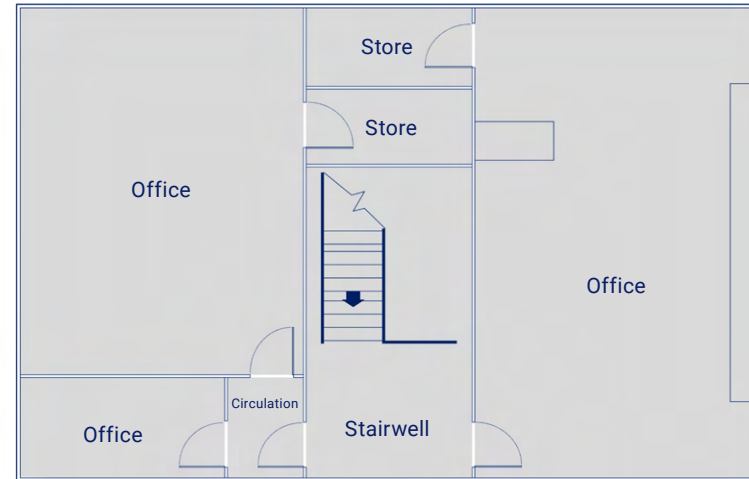
Overall size: 288m²

Location: Cheshire

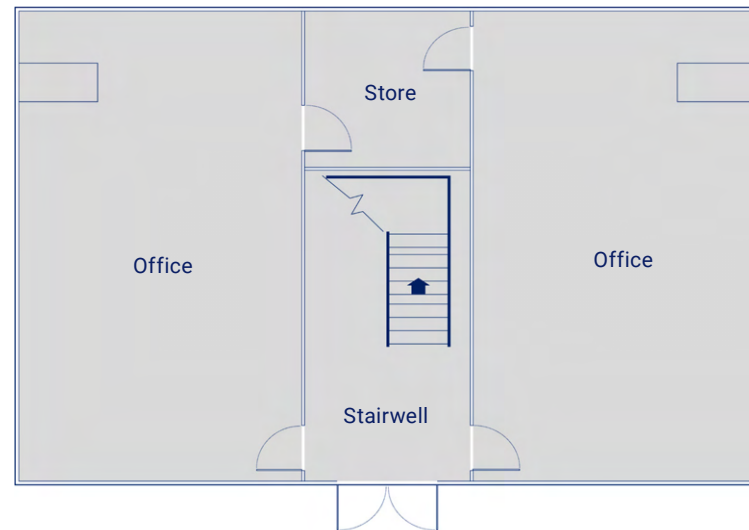
Modular building comprising of large open plan rooms, stores and office. The building has been designed in line with building regulation compliance.



First Floor



Ground Floor



Single-Storey Office Building

Ref: PCL296

Dimensions: 21m x 25.6m

Number of modules: 14

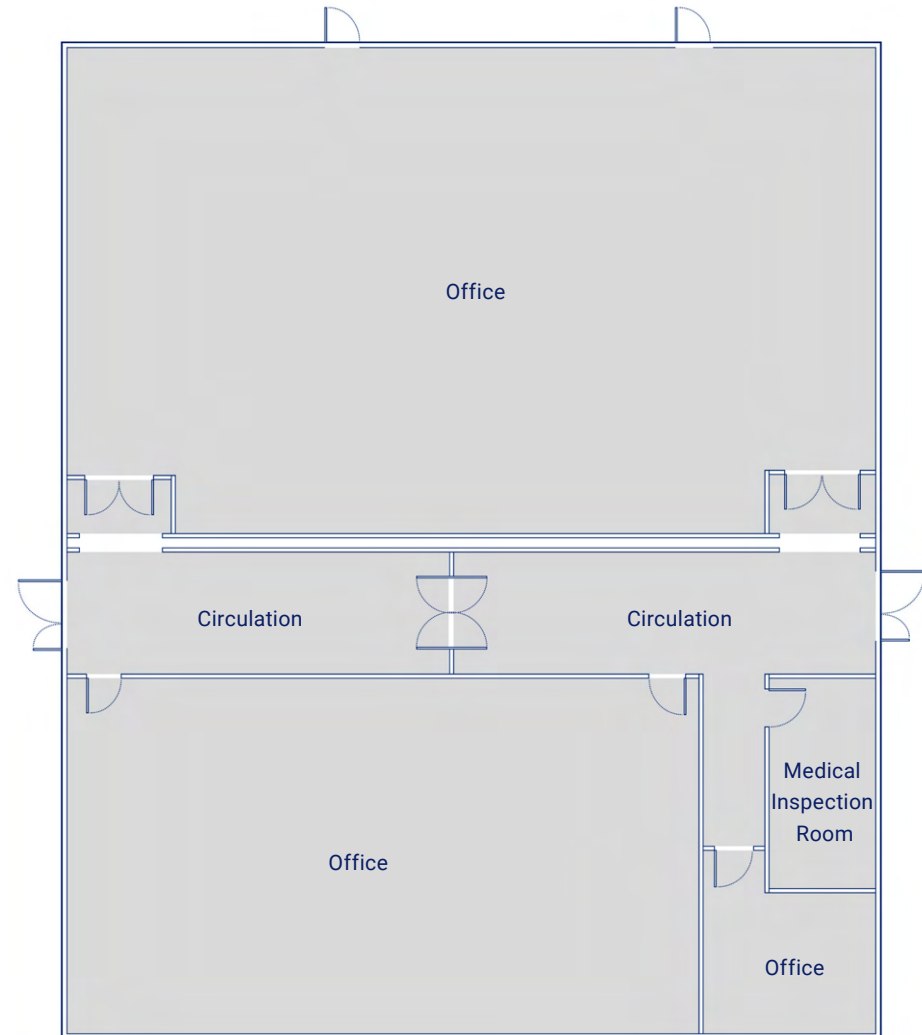
Overall size: 504m²

Location: Cheshire

Single-storey building comprising of:

- Ground Floor: Entrance to lobby & circulation, medical inspection room, and multiple offices.

The building has been designed in line with building regulation compliance.



Two-Storey Classroom Building

Ref: PCL297

Dimensions: 24m x 12m

Number of modules: 16

Overall size: 576m²

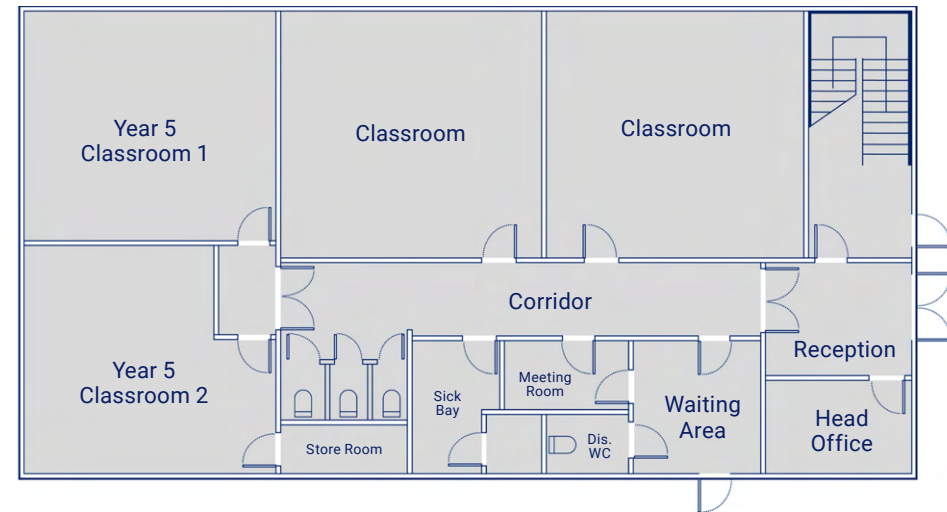
Location: Cheshire

Two-storey building comprising of:

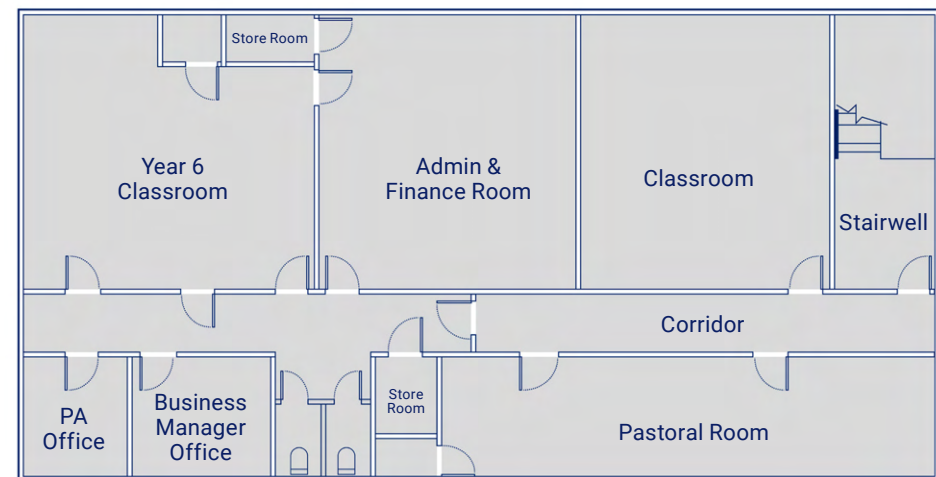
- Ground Floor: Entrance to lobby & circulation, internal staircase to first floor, 4 No. classroom areas, sick bay, store, toilets inc. disabled, head office and waiting area.
- First Floor: Internal staircase from first floor, 3 No. classroom areas, pastoral room, staff toilets, 2 No. stores and 2 No. single offices.



Ground Floor



First Floor



Four-Storey Classroom Building

Ref: PCL299

Dimensions: 69m x 12m

Number of modules: 88

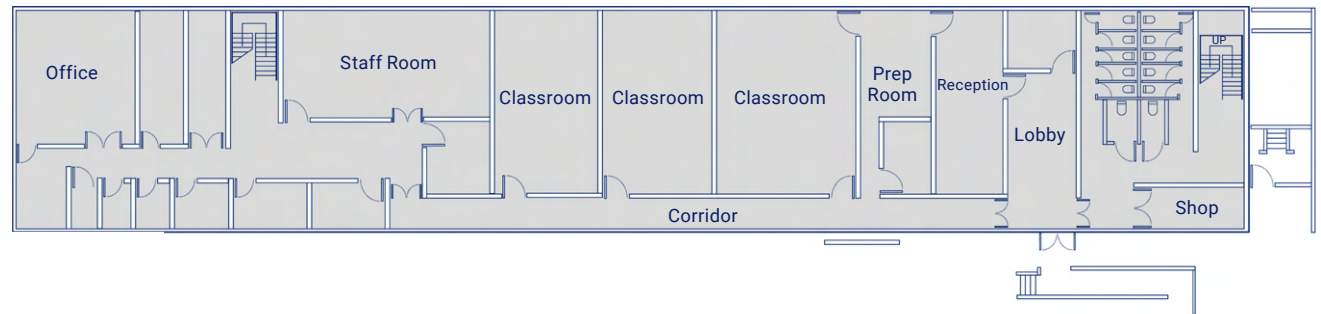
Overall size: 3096m²

Location: Cheshire

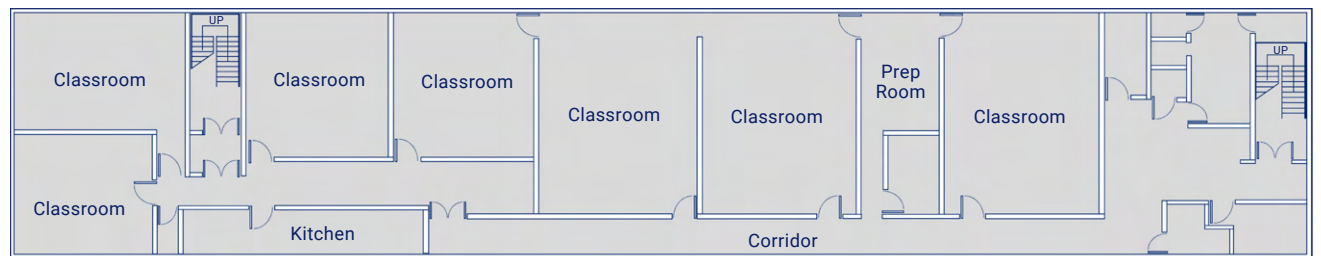
Two-storey building comprising of:

- Ground Floor: Reception, lobby, pupil toilets, various offices, stores, tuck shop and 3 No. ICT suites.
- First Floor: Internal staircase from ground floor, 3 No. maths classrooms, 3 No. science classrooms, prep room, staff toilets and various offices.

Ground Floor



First Floor

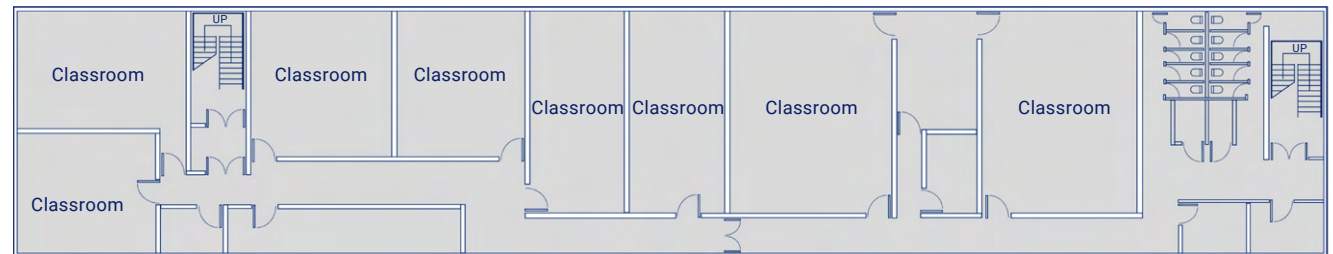


Four-Storey Classroom Building

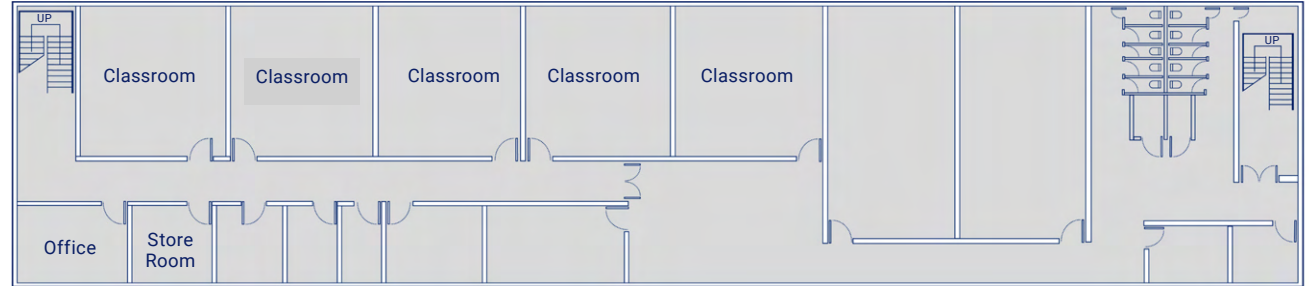
Ref : PCL299

- Second Floor: Internal staircase from first floor, 6 No. classroom areas, 2 No. science classrooms, prep room, pupil toilets and office area.
- Third Floor: Internal staircase from second floor, 7 No. classroom areas, pupil toilets, various offices and stores.

Second Floor



Third Floor



Single-Storey Office Building

Ref: PCL300

Dimensions: 9m x 12m

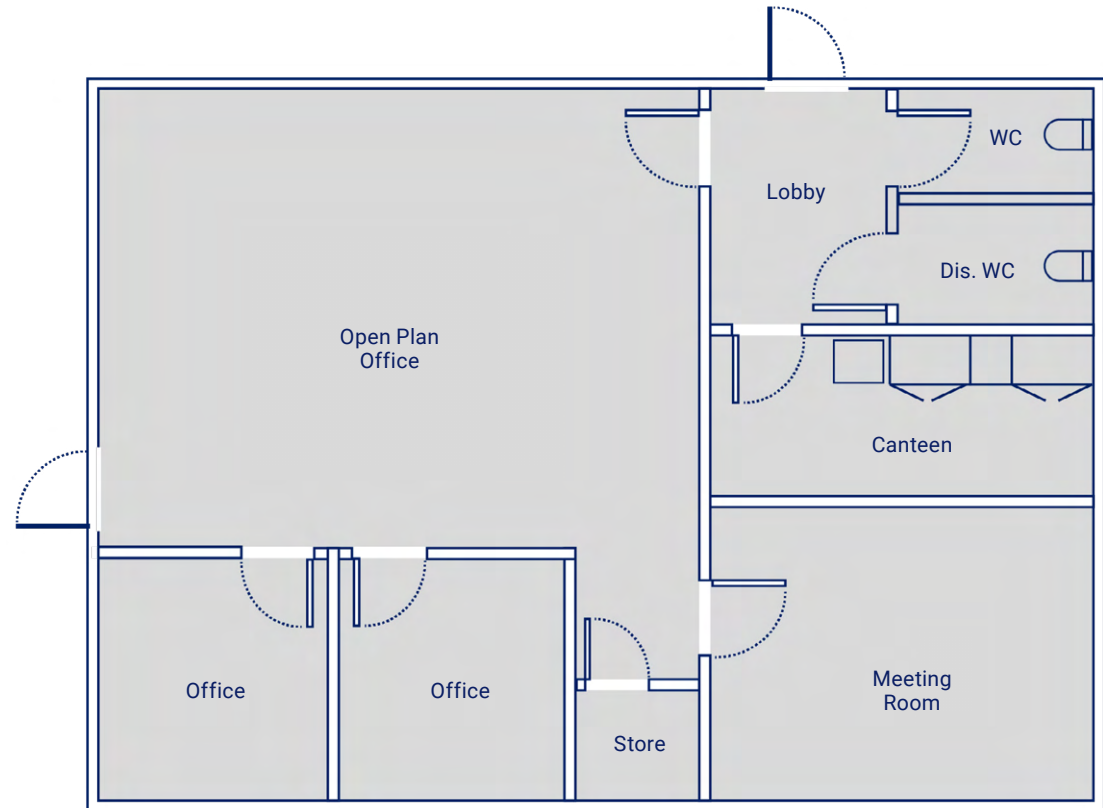
Number of modules: 3

Overall size: 108m²

Location: Cheshire

Single-storey building comprising of:

- Ground Floor: Lobby, large office, 2 No. small offices and store room.



Two-Storey Office Building

Ref: PCL302

Dimensions: 9.6m x 18m

Number of modules: 3

Overall size: 345.6m²

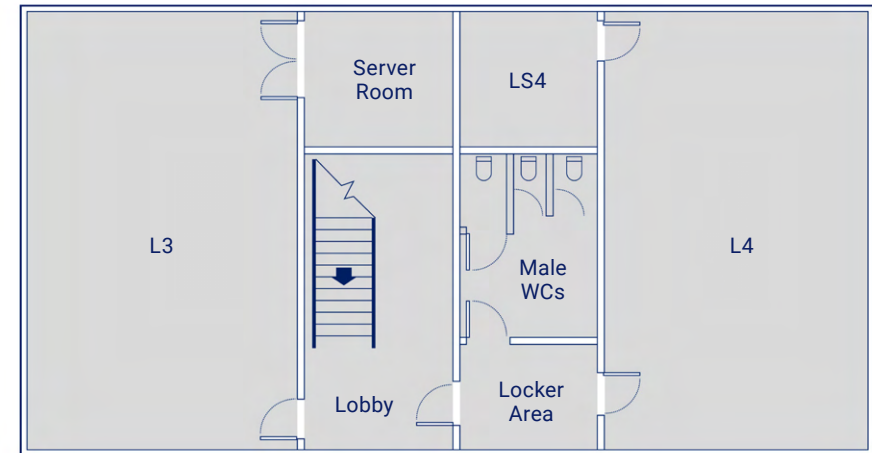
Location: Cheshire

Two-storey building comprising of:

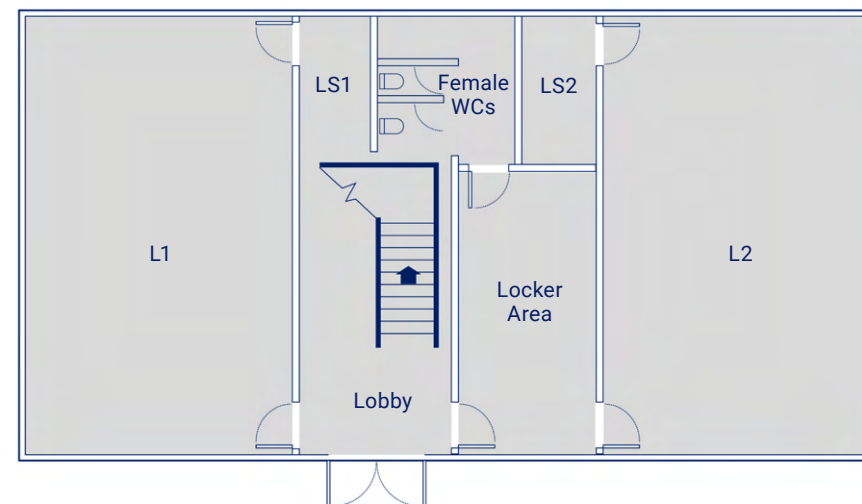
- Ground Floor: Lobby, locker area, female toilets, 2 No. classrooms, 2 No. store room and internal stairs to first floor.
- First Floor: Internal stairs from ground floor, male toilets, 2 No. classrooms and 2 No. large stores.



First Floor



Ground Floor



Two-Storey Classroom Building

Ref: PCL303

Dimensions: 9.6m x 18m

Number of modules: 12

Overall size: 345.6m²

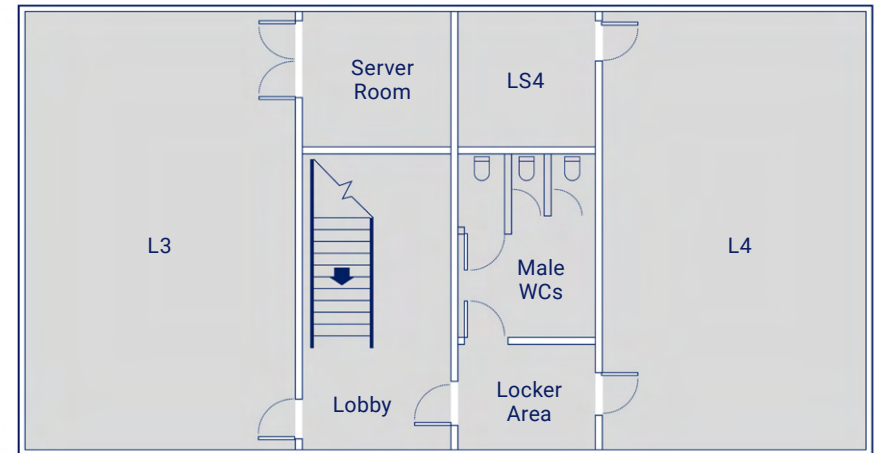
Location: Cheshire

Two-storey building comprising of:

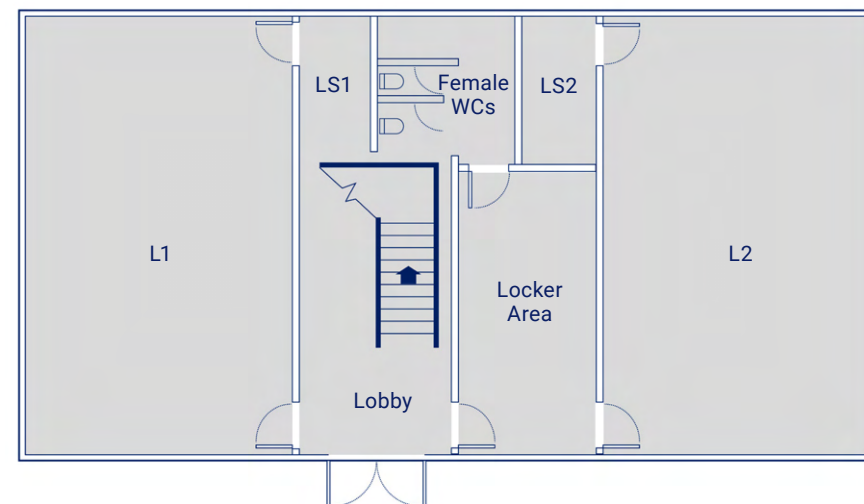
- Ground Floor: Lobby, locker area, female toilets, 2 No. classrooms, 2 No. store room and internal stairs to first floor.
- First Floor: Internal stairs from ground floor, locker area, male toilets, 2 No. classrooms and 2 No. stores.



First Floor



Ground Floor



Two-Storey Classroom Building

Ref: PCL304

Dimensions: 9.6m x 18m

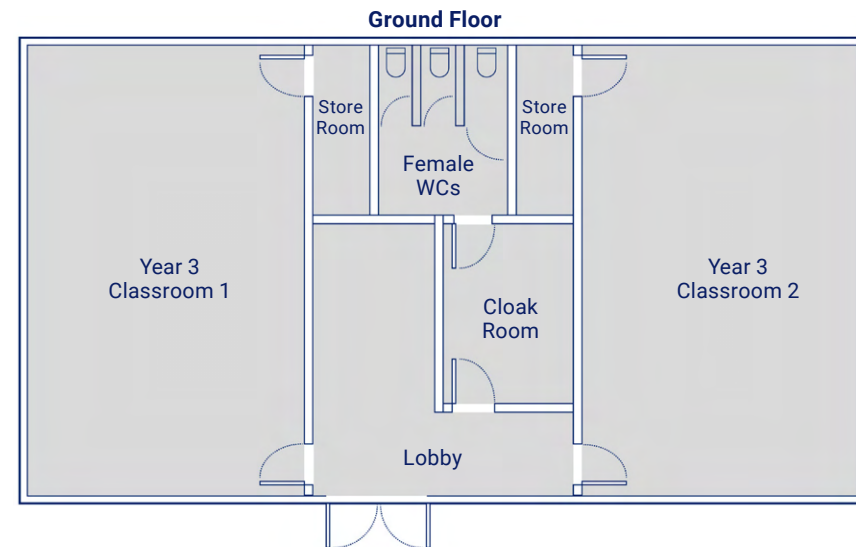
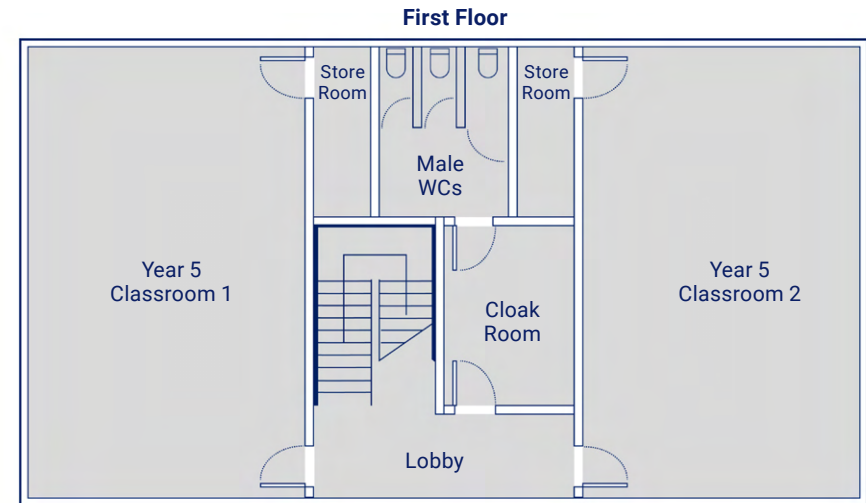
Number of modules: 12

Overall size: 345.6m²

Location: Cheshire

Two-storey building comprising of:

- Ground Floor: Lobby, locker area, female toilets, 2 No. classrooms, 2 No. store room and internal stairs to first floor.
- First Floor: Internal stairs from ground floor, locker area, male toilets, 2 No. classrooms and 2 No. stores.



Two-Storey Classroom Building

Ref: PCL305

Dimensions: 9.6m x 18m

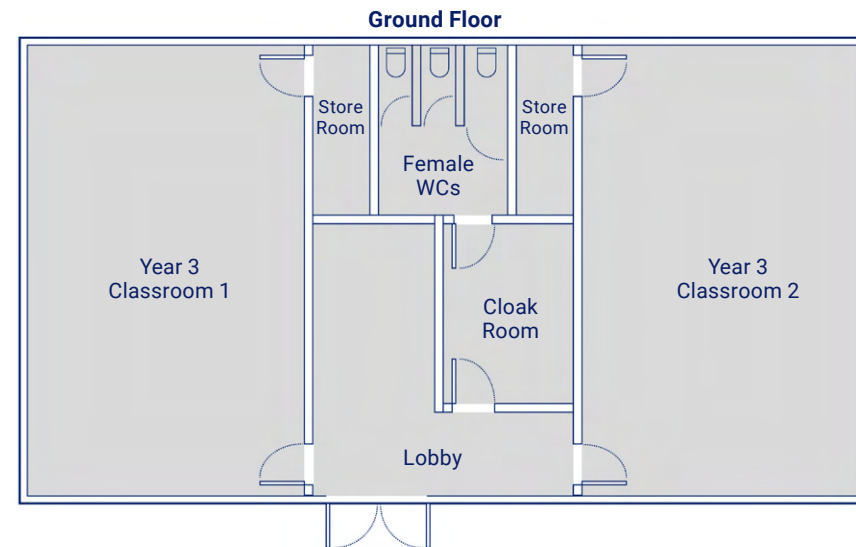
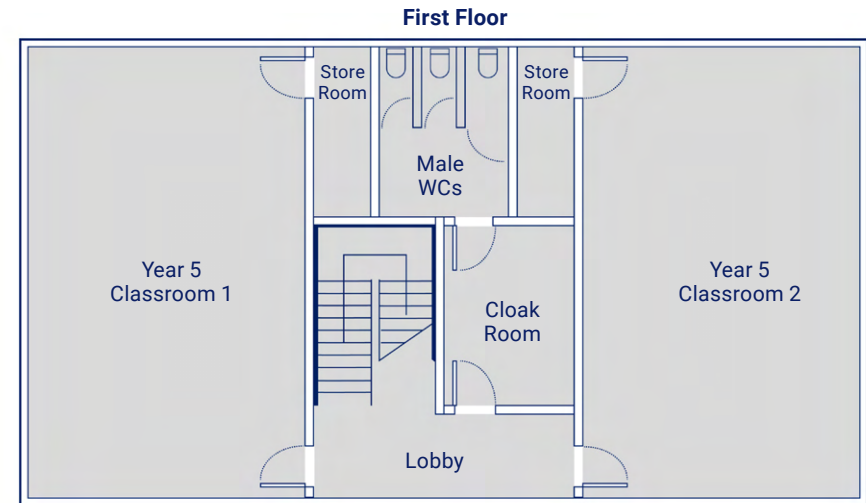
Number of modules: 12

Overall size: 345.6m²

Location: Cheshire

Two-storey building comprising of:

- Ground Floor: Lobby, locker area, female toilets, 2 No. classrooms, 2 No. store room and internal stairs to first floor.
- First Floor: Internal stairs from ground floor, locker area, male toilets, 2 No. classrooms and 2 No. stores.



Two-Storey Classroom Building

Ref: PCL306

Dimensions: 9.6m x 18m

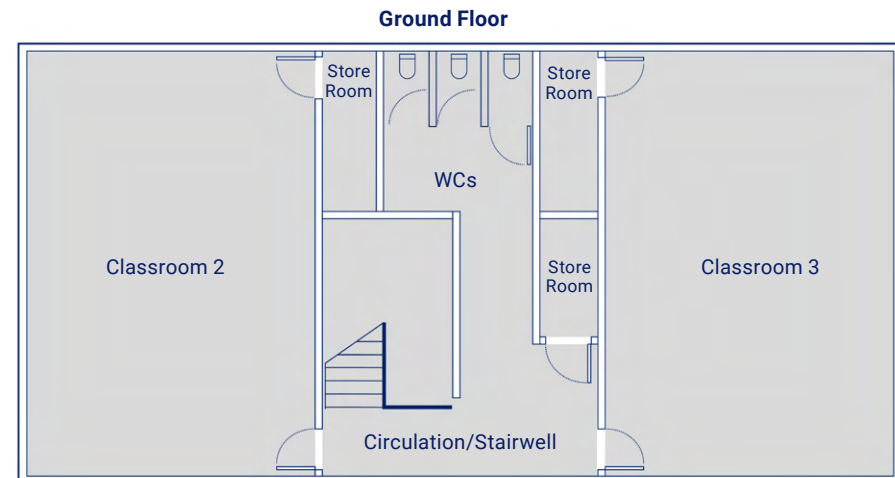
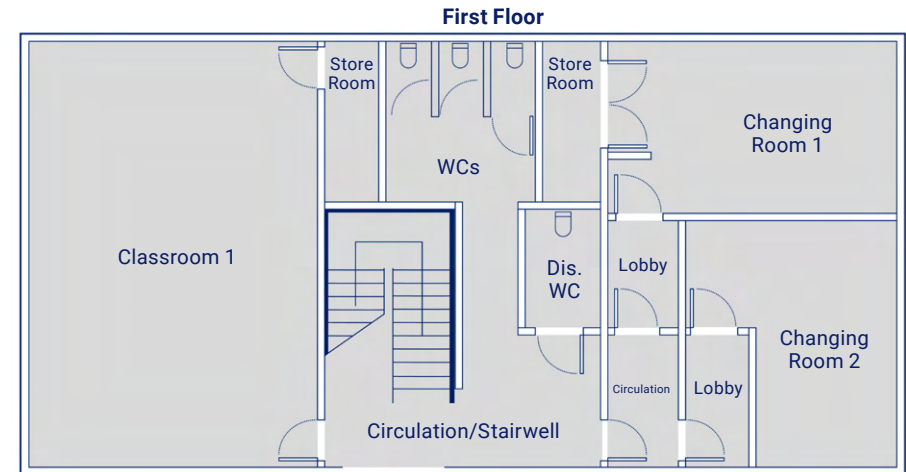
Number of modules: 12

Overall size: 345.6m²

Location: Cheshire

Two-storey building comprising of:

- Ground Floor: Lobby, locker area, unisex & disabled toilets, 1 No. classroom, 2 No. store room, male female changing rooms and internal stairs to first floor.
- First Floor: Internal stairs from ground floor, Locker Area, Unisex toilets, 2 No. classrooms and 2 No. store rooms.



Two-Storey Classroom Building

Ref: PCL307

Dimensions: 9.6m x 18m

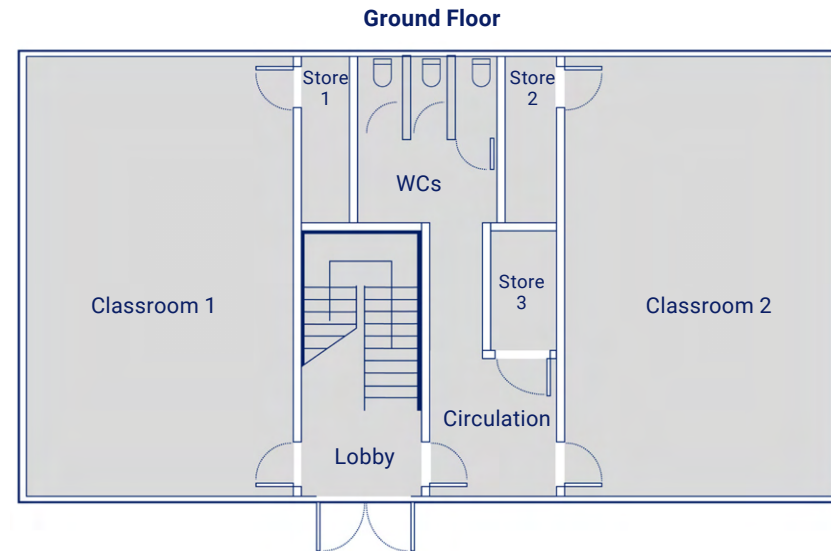
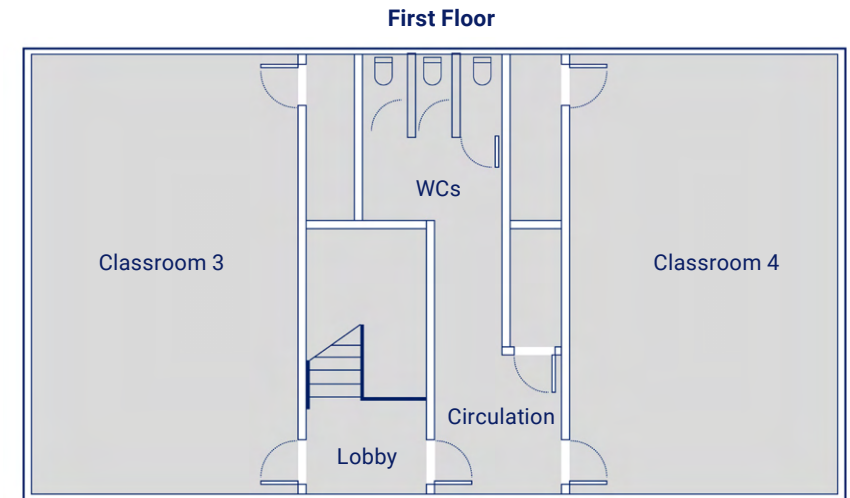
Number of modules: 12

Overall size: 345.6m²

Location: Cheshire

Two-storey building comprising of:

- Ground Floor: Lobby, locker area, unisex toilets, 2 No. classrooms, 2 No. store room, and internal stairs to first floor.
- First Floor: Internal stairs from ground floor, locker area, unisex toilets, 2 No. classrooms and 2 No. store rooms.



Two-Storey Classroom Building

Ref : PCL308

Dimensions: 9.6m x 18m

Number of modules: 12

Overall size: 345.6m²

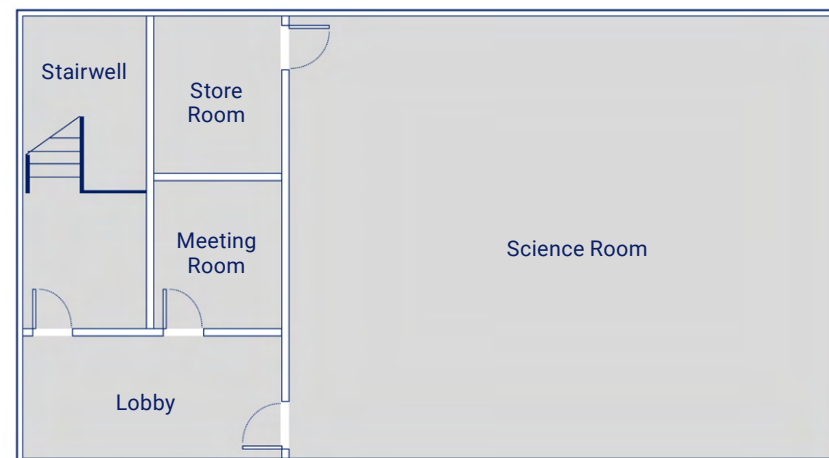
Location: Cheshire

Two-storey building comprising of:

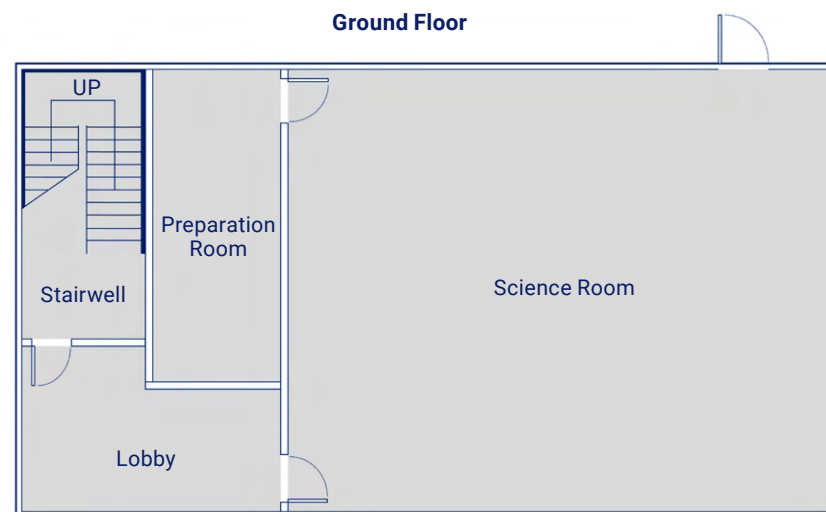
- Ground Floor: Lobby, meeting room, unisex toilets, 1 No. large classroom, 1 No. prep room and internal stairs to first floor.
- First Floor: Internal stairs from ground floor, lobby, meeting room, 1 No. large classroom and 1 No. store room.



First Floor



Ground Floor





Sustainability

Algeco is committed to sustainable development. The UN Sustainable Development Goals provide a shared blueprint for peace and prosperity for people and the planet, now and into the future. Here's how we're meeting them.

SDG 12 – Responsible Consumption & Production

Goal: Ensure sustainable consumption and production patterns.

Our sustainability roadmap details plans to switch to renewable and sustainable energy sources, offset carbon, and enhance our circular economic activities through leasing, re-deploying and end-of-life recycling.

SDG 9 – Industry, Innovation & Infrastructure

Goal: Build resilient infrastructure, promote inclusive and sustainable industrialisation and foster innovation.

We are an EcoVadis Silver member, recognising our commitment to sustainable practices and continually improving our corporate social responsibility.

SDG 4 – Quality Education

Goal: Ensure inclusive and equitable quality education and promote lifelong learning opportunities for all.

We received the Investors in Young People Gold Award. We will continue this commitment to positive outcomes for young people with up to 30 apprenticeships by the end of 2021.

SDG 13 – Climate Action

Goal: Take urgent action to combat climate change and its impacts.

Algeco, along with our parent company, the Modulaire Group, are committed to achieving Net Zero emissions by 2050, and helping our customers do the same.

SDG 5 – Gender Equality

Goal: Achieve gender equality and empower all women and girls.

We are prolific supporters of Women in Construction, half our workforce composed of women working throughout the company.

SDG 11 – Sustainable Cities & Communities

Goal: Make cities and human settlements inclusive, safe, resilient and sustainable.

We are a Partner and Gold member of the Supply Chain Sustainability School, demonstrating our active participation in the school to increase our sustainability knowledge and competence.



Monitoring our Progress

Our 2025 sustainability and ESG commitments

To deliver on our focus areas, we have outlined the following commitments to 2025, when we will review our targets and timeframes for completion. Alongside this, we have started our ESG disclosures and have mapped our key focus areas to create an ESG dashboard to monitor our progress.

All underpinned by the TCFD, UNGC and SDGs

2021

Environmental

- Report to Board progress on Net Zero Strategy through the ESGS committee
- 4 reviews per annum
- Establish Group Operational Carbon baseline tonnes of annual Scope 1 and 2 for 2020
- Establish Group Operational Energy Intensity per Modular Space Unit based on carbon footprint
- Undertake an assessment of carbon footprint of a typical Modular Space Unit (baseline 2020)
- Roll out a Group-wide strategy to reduce or mitigate Scope 1 and 2
- Design and build New Frankfurt Branch using Best Available Technology (BAT) for sustainability to achieve BREEAM Outstanding accreditation

Social

- Zero fatalities
- Reduce Lost Time Incident Frequency Rate (LTIFR) per 100,000 by 15%
- Group Zero Harm Strategy rollout
- Launch Wellbeing Helpline in every SBU (6/6)
- Rollout a Group-wide Equality, Diversity & Inclusion strategy and training
- Establish Employee Retention Rate
- Establish a Voluntary Labour Turnover Rate
- Establish Involuntary Labour Turnover Rate
- Create a Talent Development Programme

Governance

- Rollout of Code of Ethics and Anti-Corruption Policy and related training to all employees (new starters 3 months)
- Establishment of ESG & Sustainability Committee
- ESG & Sustainability Materiality assessment – 2 reviews
- ESG & Sustainability Disclosure Practice – 2 reviews
- Sustainability & ESG, climate-related risks and opportunities – 2 reviews
- Cyber risks to be reviewed with the board at least once a year
- Rollout of Cyber Security Policy and related training (new starters 3 months grace)
- Signature of the UN Global Compact
- Group-wide strategy to support the donation and discounting of units to support local community groups

2022



Resource Efficiency

Environmental

- Implement Internal Climate Change and Circular Design Key Principles Protocols for new modular space unit designs
- Greening of Supply Chain and ESG Protocols for Suppliers
- Establish Climate Adaptation Plans for each SBU
- Biodiversity Impacts Protocols for Modulaire sites
- Frankfurt Branch assessment for BREEAM
- Establish Group Operational Carbon baseline tonnes of annual Scope 3 for 2021
- Establish Science Based Targets

Social

- Paid Voluntary Time – 5,000 hrs pa.
- Completion of a global employee satisfaction survey
- Develop a Graduate Programme in all SBUs
- Group participate and undertake three UN Days: March 8th – International Women's Day; April 28th – World Day for Safety and Health at Work; October 10th – World Mental Health Day

Governance

- Commence group-wide Supply Chain audit for modern day slavery
- All design and assembly facilities to achieve ISO 14001/ ISO 9001
- Cyber risks to be reviewed with the board at least once a year
- Rollout of Cyber Security Policy and related training (new starters 3 months grace)
- Signature of the UN Global Compact
- Group-wide strategy to support the donation and discounting of units to support local community groups

2023



Low Carbon Solutions

Environmental

- Source 100 % Renewable Electricity for the Group where available
- Roll out a Group-wide strategy to reduce or mitigate Scope 3

Social

- Increase overall female participation at Board and Senior Management level
- Increase overall proportion of female employees
- Map gender wage gap for all SBUs
- Paid Voluntary Time – 7500 hrs pa.
- Group participate and undertake three UN: March 21st – International Day for the Elimination of Racial Discrimination;
- June 5th – World Environment Day; December 10th – Human Rights Day

2024

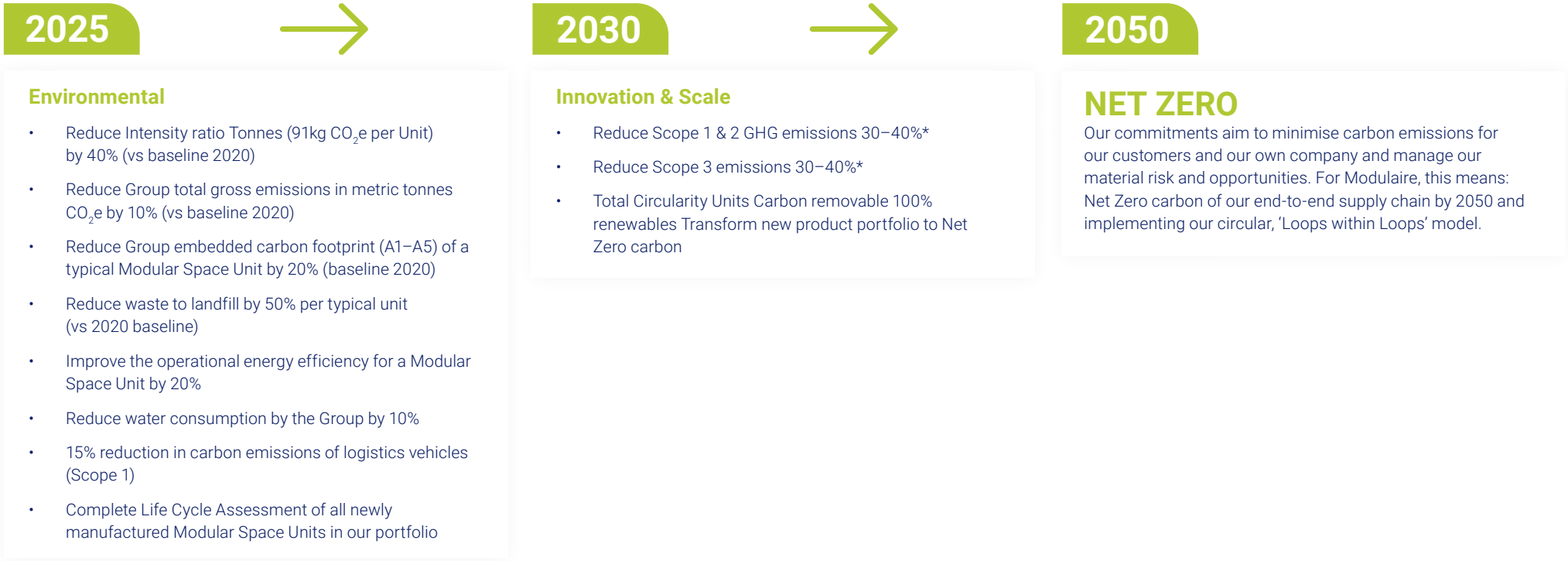
Social

- Paid Voluntary Time – 10,000 hrs pa.

Governance

- Increase number of locations with Management Systems e.g. ISO 14001/ISO 9001



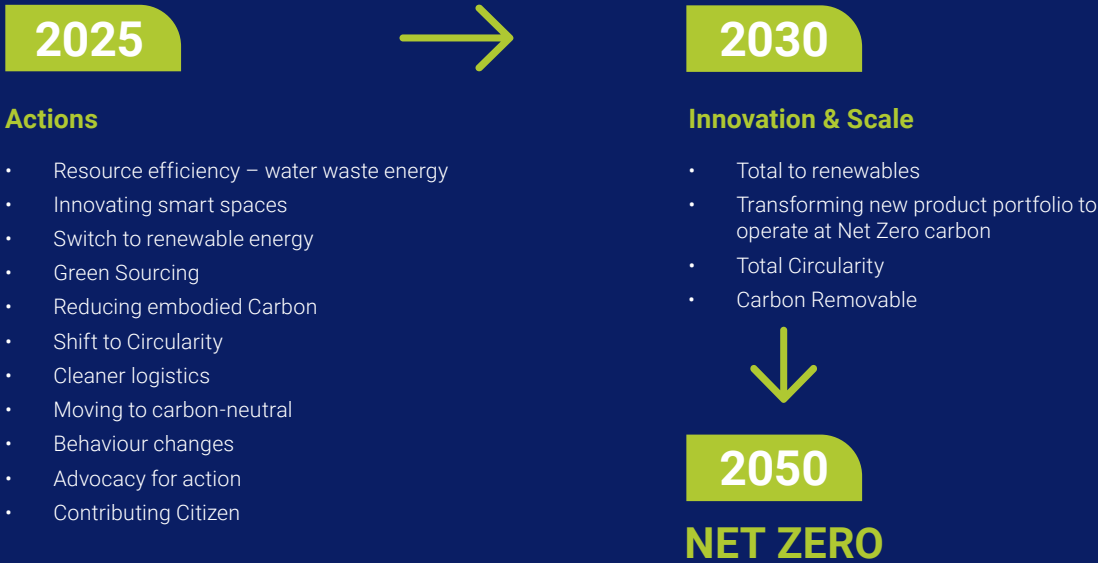


Modulaire Path to Net Zero

From a 2020 emissions base line:
Modulaire path to Net Zero by 2050

Reduce scope 1 and 2 GHG emissions 30–40% by 2030

Reduce scope 3 emissions 30–40% by 2030





Secure your building now

Call our building expert

Ricky Barford, Sales Director Modular Hire

 07891 819 150

 ricky.barford@algeco.com



As part of our commitment to sustainability, this is a digitally-designed brochure.
Please consider if you need to print it. Thank you.